

# glás

Garden Landscape  
Amenity Sportsturf

YOUR INDUSTRY. YOUR EVENT.

- ✓ NURSERY AND AMENITY
- ✓ LANDSCAPING & ARBORICULTURE
- ✓ GROUNDS MAINTENANCE & MACHINERY
- ✓ LIFESTYLE & OUTDOOR LIVING
- ✓ ENERGY WASTE & RECYCLING
- ✓ FLORISTRY
- ✓ GREENKEEPING & SPORTSTURF
- ✓ CAREERS & EDUCATION
- ✓ BUSINESS SERVICES

SUPPORTED BY  
**BORD BIA**



**16 JULY 2026**  
[WWW.GLASIRELAND.IE](http://WWW.GLASIRELAND.IE)

# AN UNBEATABLE OPPORTUNITY TO REACH TRADE BUYERS AT IRELAND'S TRADE EVENT FOR HORTICULTURE, SPORTSTURF AND GROUNDS MAINTENANCE

## ■ Why exhibit at GLAS ■

Unique one-day **networking opportunity** for buyers and sellers in Ireland's horticulture, sportsturf and related industries. Organised with the full support of Bord Bia.

Professionally organised and marketed, GLAS delivers an unrivalled opportunity to **win more business** from both current and new customers.

Core focus on amenity horticulture for the retail and landscaping sectors; **expansion continues** into forestry, greenkeeping, sportsturf and retail.

Show features include **The Growers Paddock, New Product New Plant Awards, Supplier of the Year Awards**, Careers Hub, Machinery Park, Bord Bia Thinking House and Learning Theatre.

The **National Basketball Arena** is easily accessible from all major routes and via the M50 with **ample free parking**.

**Promoted and supported by**

**Growtrade**.ie

Ireland's website and email newsletter for professionals in the horticulture, sportsturf and related industries.



## ■ Our visitors present real sales opportunities

- Exhibitors who said GLAS was "worthwhile" or "very worthwhile"

98%

- Visitors with final approval on purchasing.

83%

- Will you spend money with a supplier as a result of your visit?

56%

## ■ Who comes to GLAS

GARDEN CENTRE BUYERS | LOCAL AUTHORITIES  
SPORTSTURF PROFESSIONALS | RETAIL NURSERY BUYERS  
RETAIL FLORISTS | LANDSCAPE CONTRACTORS  
ARBORISTS AND TREE SURGEONS | SUPERMARKET BUYERS  
LANDSCAPERS AND GARDEN DESIGNERS  
GROUNDS MAINTENANCE CONTRACTORS



# PROUDLY SUPPORTED BY



The hub of Bord Bia's insight and Innovation services, The Thinking House, takes centre stage at GLAS. Providing visitors unrestricted access to the latest global trends, research, consumer insights as well as industry support programmes and innovations.

## PROUDLY SUPPORTED BY



# New Product New Plant & Supplier of the Year Awards.

The New Product New Plants awards and Supplier of the Year Awards showcase takes centre stage at GLAS, all entrants are showcased at the event and all exhibitors are encouraged to take part. A panel of expert judges choose the winners who are announced at a special awards presentation at the show and on Growtrade.ie.



**SUPPLIER OF THE YEAR**

*Young Nurseries*



**BEST ANNUAL NEW PLANT AWARD**

*Goldcrop*



**BEST IN SHOW HORTICULTURE STAND AWARD**

*Gardenworld Nurseries*



## 2025 AWARD WINNERS



For more information visit:

[glasireland.ie](http://glasireland.ie)

SUPPORTED BY  
**BORD BIA**

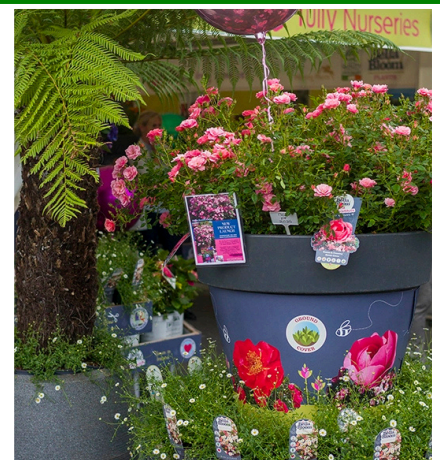
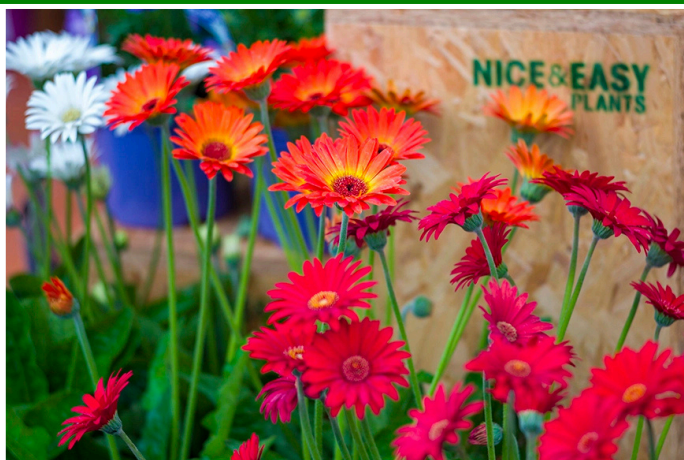
**THE LEARNING THEATRE** is a key feature at GLAS and provides a host of informative talks and workshops. Talks are free to attend and qualify for IASIS points.

With presentations provided by industry leading professionals covering a broad range of topics specific to the horticulture trade industry, can you afford to miss it?

# Learning Theatre



If you have an interest in any of the topics or would like to propose your own topic for consideration speak to the team today



# MACHINERY PARK RETURNS

## SPORTSTURF PAVILLION & MACHINERY PARK

Brought to you in association with:



Irish Institute of  
Sports Surfaces

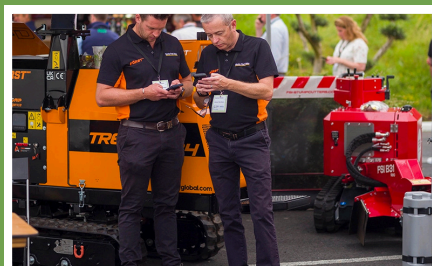
Foras Dromchlaí Spóirt na hÉireann

Now a well-established feature of the event that connects suppliers and specialists in this sector to a targeted list of invited sportsturf and parkland professionals.

Previous exhibitors in the Sportsturf Pavilion & Machinery Park include

Brodericks  
D'Arcy Sands  
Dublin Grass Machinery  
GeoRipper.ie  
Green Equipment Supplies  
Irish Grass Machinery  
Irish Institute of Sports Surfaces  
Leinster Turf Equipment  
Leixlip Tool Hire  
Martyns Grasslawns

MG Seed Company  
MSK Silversands  
NAD & NAD Sports  
Pat O'Donnell Co.  
Ranging/Belrobotics  
Reesink Turfcare  
Reel-Tech Golf Hire  
Ryalls Equipment  
Southern Machinery  
Woodpecker Environmental



## LANDSCAPE SHOW

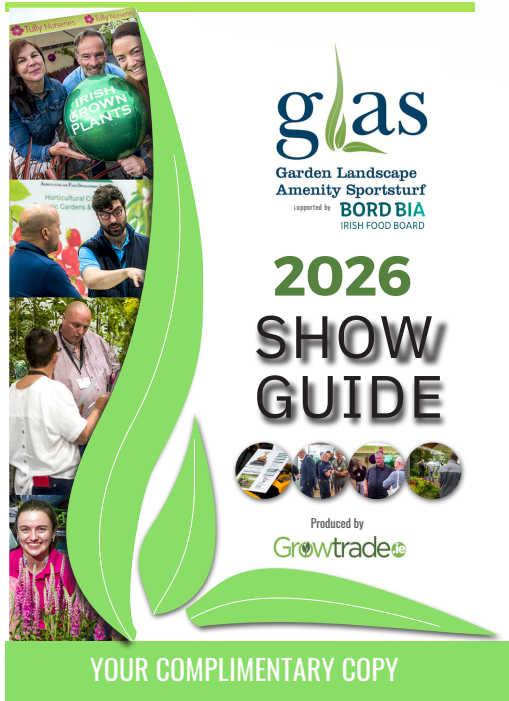
A show within a show that brings together all of the expertise from the landscaping sector. Supported by the ALCI, ILI & GLDA, who will be on hand to meet new and existing members, The Landscape Show at GLAS will feature exhibits from the leading suppliers, as well as informative talks in our Learning Theatre.



SUPPORTED BY:



# Show Guide Promotional Opportunities



## Write your own editorial feature

The GLAS showguide is now opening its pages to experts in a range of fields to hear what topics they think will make a critical difference for organisations and retailers working in horticulture, sportsturf and ground maintenance sectors. Cover an emerging trend, existing solution, technology or a lingering issue that the market is looking to solve.

### Book now: Contact the team

**Eamonn Maguire** 01 294 7765  
Eamonnmaguire@mediateam.ie 087 123 5167

**Paul Byrne** 087 2542 625  
paulbyrne@mediateam.ie

## Your promotional opportunity that extends beyond the show

An ideal promotional platform for your service or brand. Every visitor will receive a copy - a captive readership representing all of the key buyers and specifiers, in Ireland's horticulture, sportsturf and ground maintenance sectors and includes:

A-Z Exhibitor listings / Floorplan / Full details of exhibitor highlights, product launches and show features / Bord Bia reference section with market update and contact details / includes coverage from other notable stakeholders.

ADVERTISING RATES	SIZE (mm)	COST (€)
Double Page Spread	300x220	€1200
Full Page	150x220	€800
Half Page Horizontal	150x100	€400
Half Page Vertical	75x220	€400
Editorial (1000 words)	-	€1200
Editorial (500 words)	-	€800

### Note:

Talk to us about a **Highlighted Listing** to include your logo. All advertisers receive a free **Highlighted Listing**.

GLAS is organised by Mediateam Ltd,  
55 Spruce Avenue, Stillorgan Industrial Park, Dublin 18.

☎ 01 294 7765 | 087 123 5167

[www.mediateam.ie](http://www.mediateam.ie)

[www.glasireland.ie](http://www.glasireland.ie)

# The Grower's Paddock & Outdoor



A very popular addition to GLAS, The Grower's Paddock & Outdoor area highlights the glorious colour and incredible vibrancy of the event and indeed our industry overall. Featuring displays and demos, from nurseries to machinery & commercial vehicles.

A limited number of Grower's Paddock spaces are available to suitable exhibitors. These spaces are located at the show entrance and are adjacent to the very impressive grower's pagodas, the catering facilities and seating areas, all of which are outdoor.

**5M x 5M Growers Pagoda rental is €1,200 plus VAT, which are in addition to the paddock exhibition space priced at €80 per square metre plus VAT**

## Marquees

Marquees, in multiple configurations are available to book, through the organiser, to paddock exhibitors. These can be used to enhance a display and to provide some cover as well as a private area as required. Marquee sizes and prices, which are in addition to the paddock exhibition space priced at €80 per square meter + VAT, are as follows:

All prices are plus VAT

3M X 3M  
€315

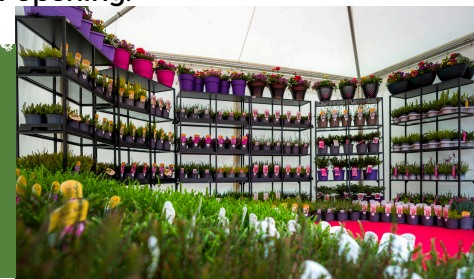
3M X 5M  
€470

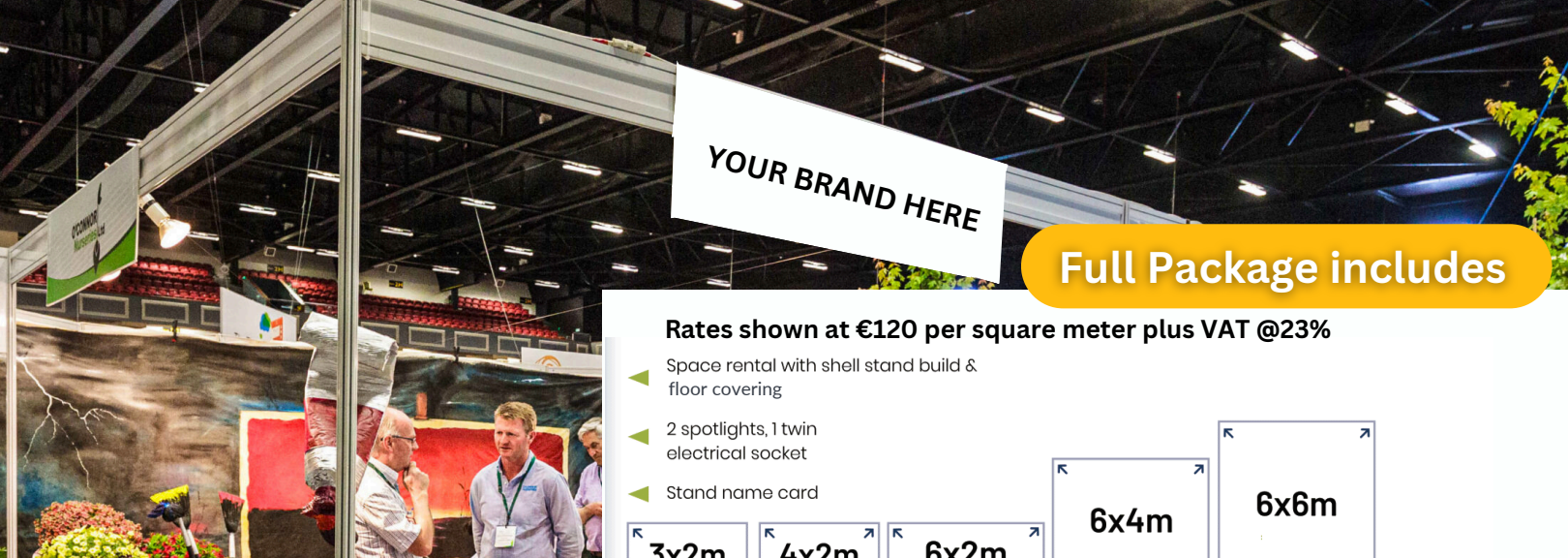
3M X 6M  
€540

3M X 9M  
€770

3M X 12M  
€910

Marquee prices include delivery, installation and removal. For sizes other than those listed please ask your GLAS representative. Marquee floors and exhibition carpet are also available to paddock exhibitors and will be quoted upon request. Orders must be finalised two weeks prior to the show opening.





## Full Package includes

Rates shown at €120 per square meter plus VAT @23%

- ◀ Space rental with shell stand build & floor covering
- ◀ 2 spotlights, 1 twin electrical socket
- ◀ Stand name card

3x2m €720	4x2m €960	6x2m €1440	6x4m €2880	6x6m €4320
--------------	--------------	---------------	---------------	---------------

## Space only

€100 per square metre plus VAT @ 23% Space-only stands are available for sizes greater than 24 sqm perfect for exhibitors who wish to design and build their own stand. Optional extra: Carpet @ 10 per sqm. Contact the team for rates

## Grower's Paddock & Outdoor

€80 per square metre plus VAT @ 23% Space-only stands are available for sizes greater than 24 sqm perfect for exhibitors who wish to design and build their own stand. See the page titled The Grower's Paddock & Outdoor for more details.

## Notes

Additional extras including furniture, electrics, lighting and floor covering are available through the GLAS exhibitor website.

## BUILDUP AND BREAKDOWN

Buildup	JULY 15	12:00 pm - 7 pm
Show Day	JULY 16	9:00 am - 5 pm
Breakdown	JULY 16	5:30 pm - 7 pm

Additional buildup/breakdown options by arrangement with the organisers.

## BOOK NOW: CONTACT THE TEAM



**Eamonn Maguire**  
Tel. 087 123 5167  
eamonnmaguire@mediateam.ie



**Paul Byrne**  
Tel. 01 294 7711  
paul@mediateam.ie

**glas** Garden Landscape  
Amenity Sportsturf



IASIS  
Approved  
Event



Member Irish  
Exhibition  
Organisers  
Association

GLAS is organised by Mediateam Ltd. Ph (01) 294 7765.

[www.mediateam.ie](http://www.mediateam.ie) [www.glasireland.ie](http://www.glasireland.ie)

For more visit [glasireland.ie](http://glasireland.ie)